

Document level: Ward / Team
Code: CC3
Issue number: 1.1

Standard operating procedure for the use of Low Level Laser Light Therapy (Class 3B Laser Equipment)

Lead executive	Medical Director
Authors details	Clinical Team Leader - 01244 385336

Type of document	Standard Operating Procedure
Target audience	All musculoskeletal physiotherapy staff
Document purpose	To ensure musculoskeletal physiotherapy staff are aware of the procedures for using the Class 3B laser equipment.

Approving meeting	CWP West Governance and Quality Meeting	Date 30-Jul-13
Implementation date	30-Jul-13	

CWP documents to be read in conjunction with	
HR6	Mandatory Employee Learning (MEL) policy
CP3	Health records policy
MH1	Mental Health Law policy suite

Document change history	
What is different?	Section 3 procedures has been converted into quick reference flowchart 1
Appendices / electronic forms	
What is the impact of change?	Low impact but helps streamline the document and allow staff to access the procedure with ease.

Training requirements	No - Training requirements for this policy are in accordance with the CWP Training Needs Analysis (TNA) with Education CWP.
-----------------------	---

Document consultation	
Clinical Services	Physiotherapy staff, Medical devices group
Corporate services	
External agencies	

Financial resource implications	None
---------------------------------	------

External references	
1. Intellect Mobile Laser Model 2779 User Manual	
2. http://www.electrotherapy.org/modalities/laser.htm	

Equality Impact Assessment (EIA) - Initial assessment	Yes/No	Comments
Does this document affect one group less or more favourably than another on the basis of:		

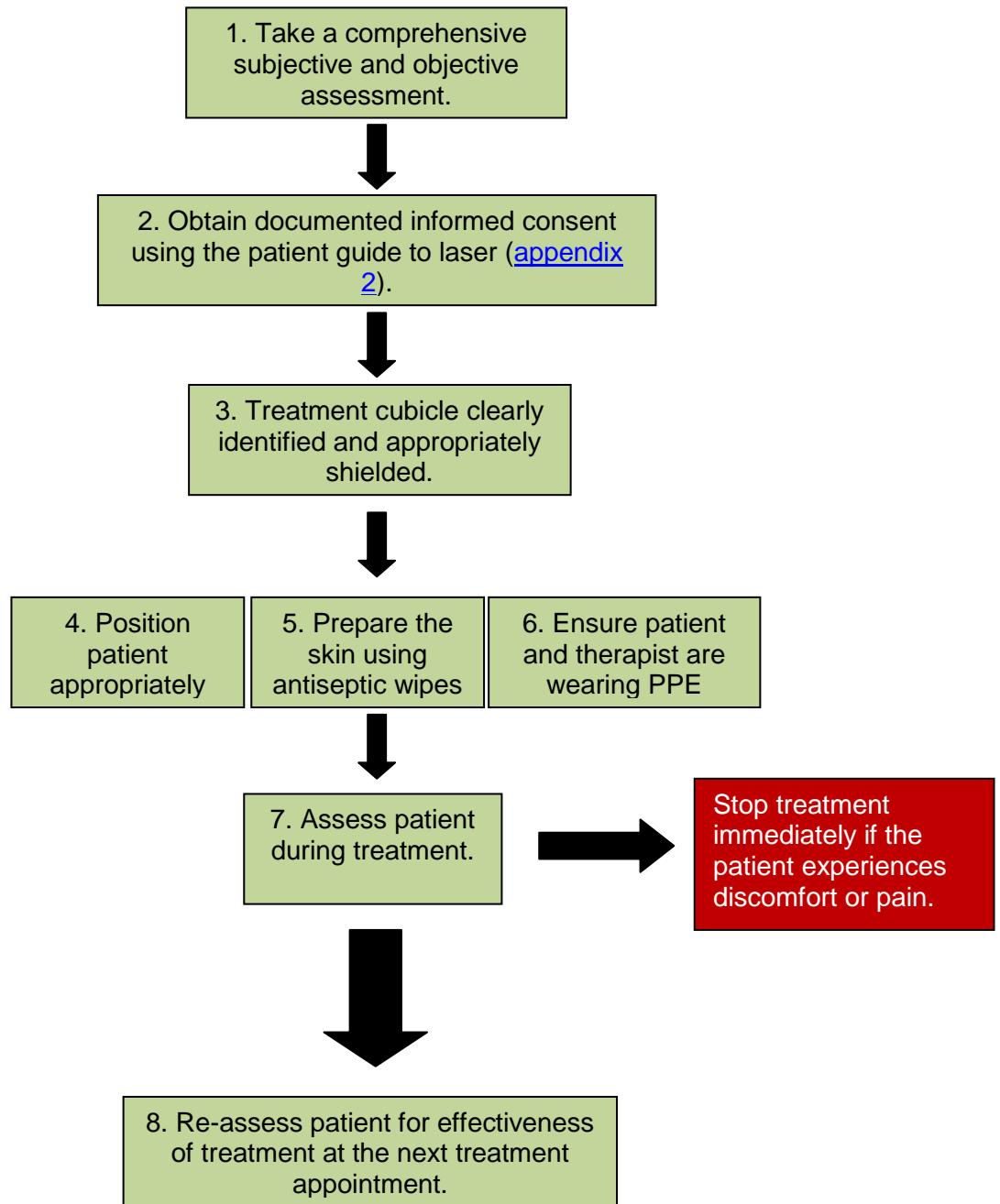
Equality Impact Assessment (EIA) - Initial assessment	Yes/No	Comments
- Race	No	
- Ethnic origins (including gypsies and travellers)	No	
- Nationality	No	
- Gender	No	
- Culture	No	
- Religion or belief	No	
- Sexual orientation including lesbian, gay and bisexual people	No	
- Age	No	
- Disability - learning disabilities, physical disability, sensory impairment and mental health problems	No	
Is there any evidence that some groups are affected differently?	No	
If you have identified potential discrimination, are there any exceptions valid, legal and/or justifiable? N/A		
Is the impact of the document likely to be negative?	No	
- If so can the impact be avoided?	N/A	
- What alternatives are there to achieving the document without the impact?	N/A	
- Can we reduce the impact by taking different action?	N/A	
Where an adverse or negative impact on equality group(s) has been identified during the initial screening process a full EIA assessment should be conducted.		
If you have identified a potential discriminatory impact of this procedural document, please refer it to the human resource department together with any suggestions as to the action required to avoid / reduce this impact. For advice in respect of answering the above questions, please contact the human resource department.		
Was a full impact assessment required?	No	
What is the level of impact?	Low	

Contents

Quick reference flowchart	4
1. Introduction.....	5
2. Definitions.....	5
3. Flowchart rationales	5
4. Duties and responsibilities	5
Appendix 1 - Indications and contraindication for treatment.....	6
Appendix 2 - Patient information leaflet	7

Quick reference flowchart

For quick reference the guide below is a summary of actions required.



1. Introduction

This guideline is intended to ensure safe application of laser therapy within the musculoskeletal physiotherapy department. It is not intended to give any indication on dosage calculations or discuss clinical issues.

2. Definitions

Laser therapy is the application of light to injuries and lesions to stimulate healing in tissues. Therapy lasers fall in the category of 3A or 3B lasers and are often referred to as Low Level Laser Therapy (LLLT) or Low Intensity Laser Therapy (LILT). The laser used within the physiotherapy department is a 3B laser.

Recent research has demonstrated that laser therapy can help to resolve inflammation, reduce pain, increase speed, quality and strength of tissue repairs and resolve infection.

3. Flowchart rationales

No.	Rationale
1	<ul style="list-style-type: none">- To establish the nature of the condition and form a clinical impression- To rule out red flags- To ascertain clinical appropriateness of the condition for the use of laser (appendix 1)
2	<ul style="list-style-type: none">- To comply with physiotherapy professional guidelines
3	<ul style="list-style-type: none">- To mitigate any risk to staff or patients
4	<ul style="list-style-type: none">- To allow easy access to the area to be treated and comfort for patient and therapist
5	<ul style="list-style-type: none">- To ensure safety and effectiveness of treatment.
6	<ul style="list-style-type: none">- To ensure protection of the eyes of the therapist and patient.
7	<ul style="list-style-type: none">- To ensure patient and staff safety.
8	<ul style="list-style-type: none">- Clinical reasoning and clinical effectiveness.

4. Duties and responsibilities

All members of staff using laser as a form of treatment need to adhere to the standard operating procedures (SOP). The Therapies Manager will approve and cascade the operating procedure for the Low Laser Light Therapy to ensure it is accessible by all staff across all sites.

The Team Leaders will ensure appropriate training is provided to all staff members. Additional training can also be provided for any individual member of the physiotherapy staff, if a development need is identified during the Personal Development Review process or in their Clinical Supervision Sessions.

Physiotherapists and physiotherapy assistants have to be familiar with the SOP and training completed before using the laser machine. They should follow the SOP and report any incidents relating to the SOP on the DATIX reporting system.

Appendix 1 - Indications and contraindication for treatment

Indications	Contraindications
<p>Increasing local blood circulation.</p> <p>Relieving minor muscle and joint aches, pains and stiffness.</p> <p>Relaxing muscles.</p> <p>Relieving muscle spasms.</p> <p>Relieving minor pain and stiffness associated with arthritis.</p> <p>Promoting nerve regeneration, bone growth and ligament repair.</p>	<ul style="list-style-type: none"> - Where analgesia may mask progressive pathology or where the practitioner wants to retain the beneficial aspects of pain. - Applied to or around the eye. - Over areas injected with steroids in the past 2-3 weeks. - Over suspicious areas or areas that contain potentially malignant tissues. - On or over a tattoo. - Over areas of active haemorrhage. - Over a pregnant uterus. - Over the thyroid or carotid sinus region of the neck. - Over the vagus nerve or cardiac region of the chest. - Directly over open wounds. - Over sympathetic ganglia. - Where no diagnosis has been made. - On patient with infections or a fever. - Over or near bone growth centre until bone growth is complete. - Over the thoracic area in patient with pacemakers. - Over ischaemic tissues in individuals with vascular disease.

Additional precautions

Over an area of the spinal cord following a laminectomy, i.e. when major covering tissues have been removed.

Over areas of absent sensation.

On patients with haemorrhagic diatheses.

Refer to the User Manual for any further details:

Intellect Mobile Laser Model 2779 User Manual – downloaded 5/7/11

Appendix 2 - Patient information leaflet

A Patient Guide to Laser

What is laser?

Low level laser therapy (LLLT) is a medical treatment that involves the application of light to injuries to stimulate healing in tissues. Recent research has shown that laser can help to resolve inflammation, reduce pain, increase speed, quality and strength of tissue repairs and resolve infection.

What can it do?

- Increase local blood circulation;
- Reduce pain;
- Reduce muscle spasm;
- Relieving minor pain and stiffness associated with arthritis;
- Promoting nerve regeneration, bone growth and ligament repair.

It is best not to have laser treatment:

- Over a cancerous area;
- Over areas injected with steroids in the past 2-3 weeks;
- On or over a tattoo;
- Over a pregnant uterus;
- On patient with infections or a fever;
- In children over parts of the joint which are still growing. These are known as the epiphyseal growth plates. Over or near bone growth centres until bone growth is complete;
- If there is an infection in the area.

Are there any risks?

You will be asked to wear goggles to protect your eyes.

Side-effects are unlikely. However, if you experience any increase in pain, you should inform your physiotherapist so that the treatment can be reviewed.

What should I feel?

You will feel the head of the laser unit on your skin. This should not cause any pain.